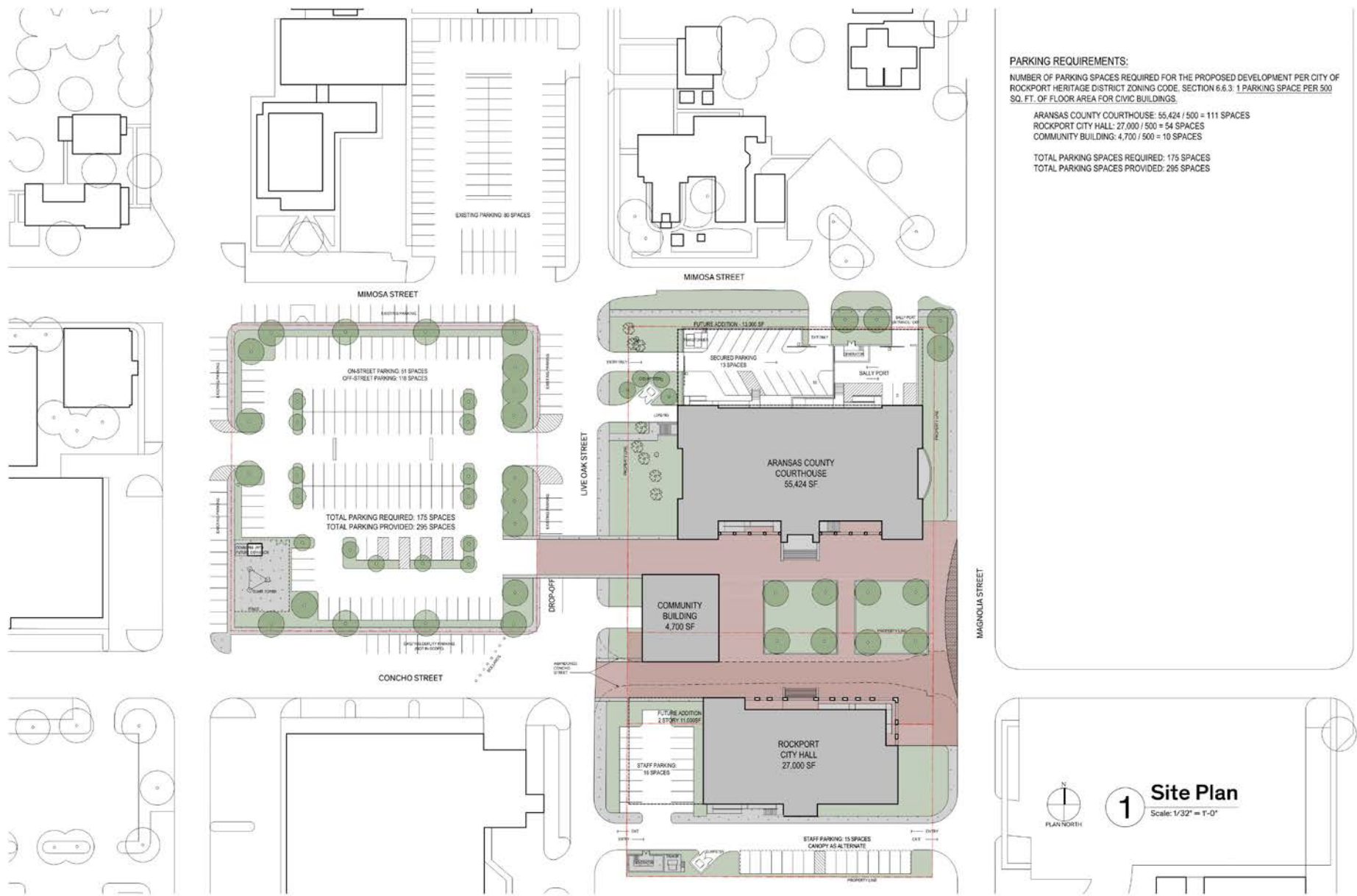


# SITE PLAN



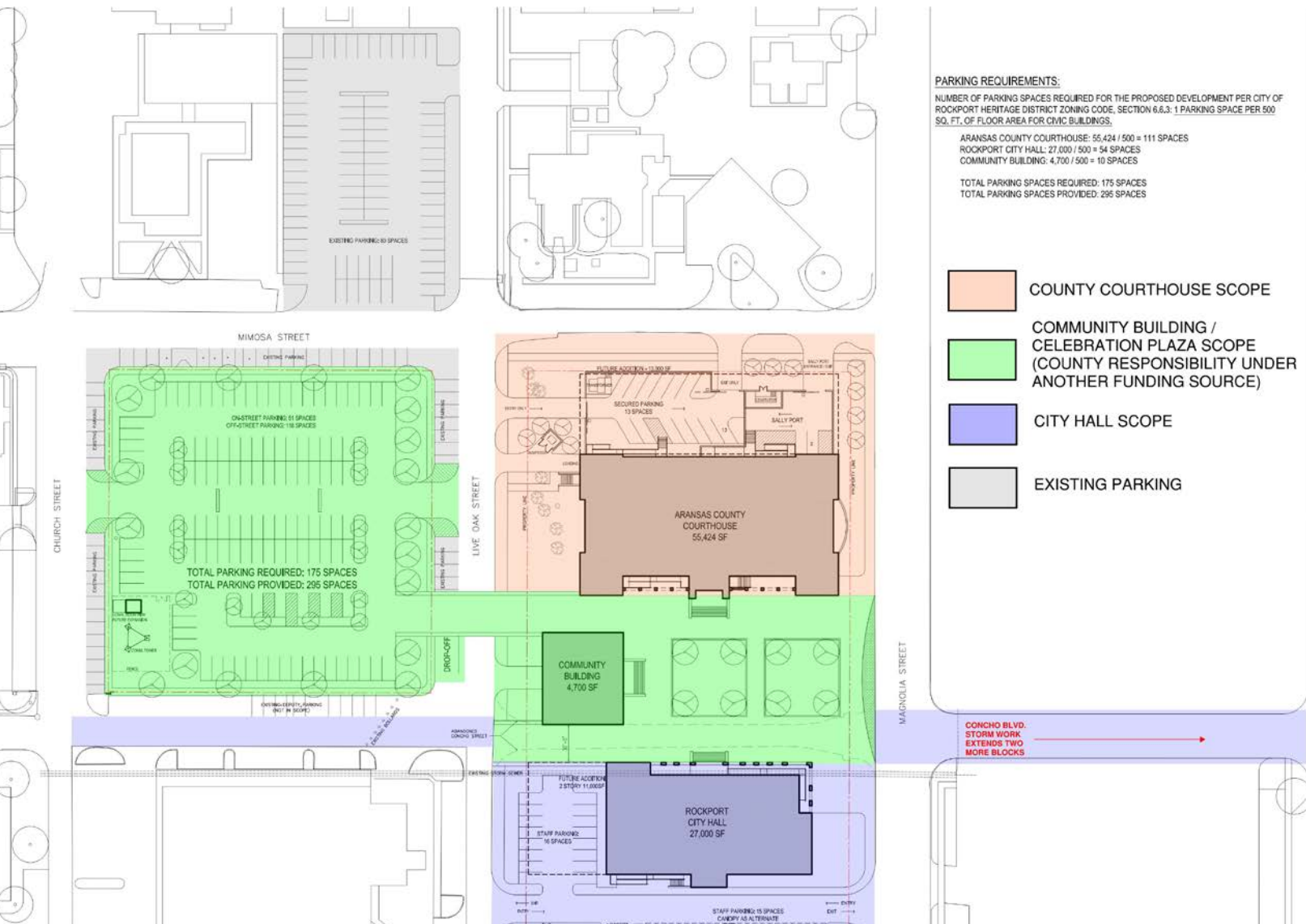
# SOUTH ELEVATION – 3 STORY (55,424 Sq. Ft.)

PGAL

Architexas



# FUNDING SCOPE



**PARKING REQUIREMENTS:**  
 NUMBER OF PARKING SPACES REQUIRED FOR THE PROPOSED DEVELOPMENT PER CITY OF ROCKPORT HERITAGE DISTRICT ZONING CODE, SECTION 6.6.3: 1 PARKING SPACE PER 500 SQ. FT. OF FLOOR AREA FOR CIVIC BUILDINGS.

ARANSAS COUNTY COURTHOUSE: 55,424 / 500 = 111 SPACES  
 ROCKPORT CITY HALL: 27,000 / 500 = 54 SPACES  
 COMMUNITY BUILDING: 4,700 / 500 = 10 SPACES

TOTAL PARKING SPACES REQUIRED: 175 SPACES  
 TOTAL PARKING SPACES PROVIDED: 295 SPACES

- COUNTY COURTHOUSE SCOPE
- COMMUNITY BUILDING / CELEBRATION PLAZA SCOPE (COUNTY RESPONSIBILITY UNDER ANOTHER FUNDING SOURCE)
- CITY HALL SCOPE
- EXISTING PARKING